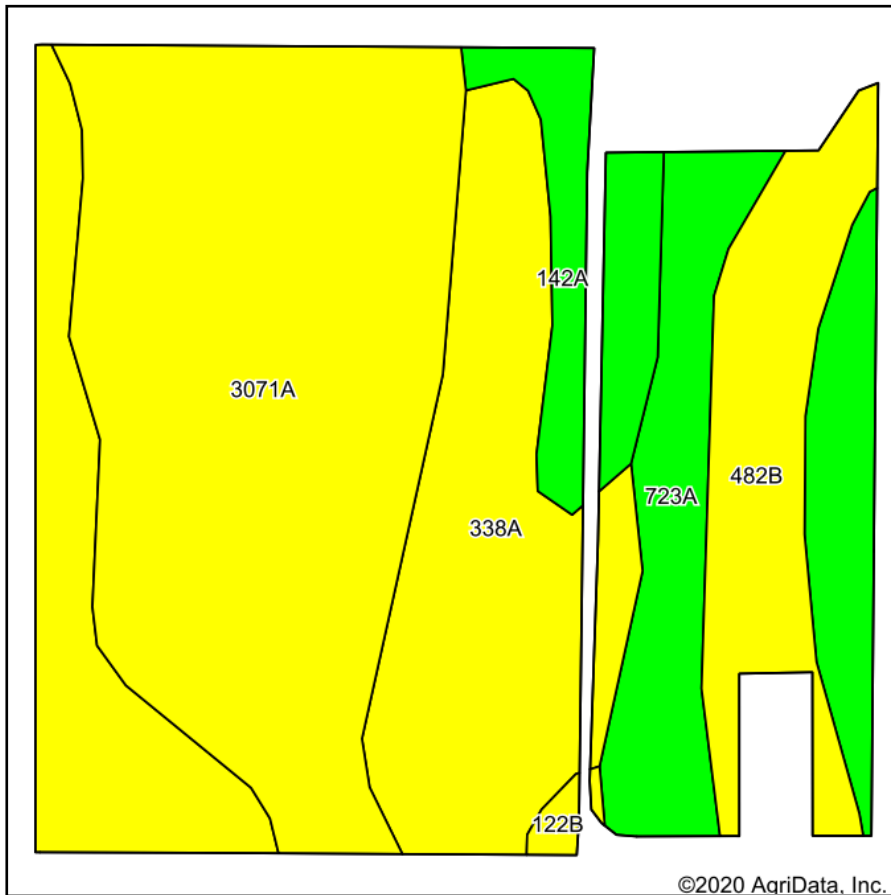
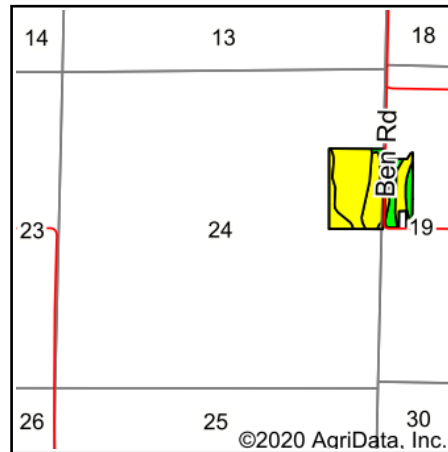


Soils Map



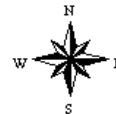
Soils data provided by USDA and NRCS.



State: **Illinois**
 County: **Saline**
 Location: **24-9S-6E**
 Township: **Harrisburg**
 Acres: **39.83**
 Date: **10/1/2020**



Maps Provided By:



Area Symbol: IL165, Soil Area Version: 15					
Code	Soil Description	Acres	Percent of field	Il. State Productivity Index Legend	Crop productivity index for optimum management
3071A	Darwin silty clay, 0 to 2 percent slopes, frequently flooded	15.87	39.8%	111	111
338A	Hurst silt loam, 0 to 2 percent slopes	11.46	28.8%	100	100
723A	Reesville silt loam, 0 to 2 percent slopes	5.52	13.9%	124	124
**482B	Uniontown silt loam, 2 to 6 percent slopes	4.27	10.7%	**116	**116
142A	Patton silty clay loam, 0 to 2 percent slopes	2.49	6.3%	132	132
**122B	Colp silt loam, 2 to 5 percent slopes	0.22	0.6%	**97	**97
Weighted Average					111.4

Table: Optimum Crop Productivity Ratings for Illinois Soil by K.R. Olson and J.M. Lang, Office of Research, ACES, University of Illinois at Champaign-Urbana. Version: 1/2/2012 Amended Table S2 B811

Crop yields and productivity indices for optimum management (B811) are maintained at the following NRES web site: <http://soilproductivity.nres.illinois.edu/>

** Indexes adjusted for slope and erosion according to Bulletin 811 Table S3

*c: Using Capabilities Class Dominant Condition Aggregation Method

Soils data provided by USDA and NRCS. Soils data provided by University of Illinois at Champaign-Urbana.